



Hosted Payment Processing System



SunGard Higher Education Compatible

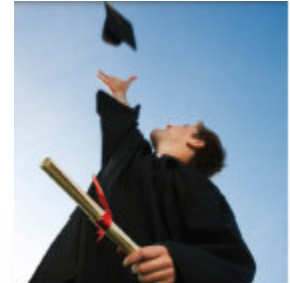


Confidential Property of Official Payments Corp.



Agenda

Official Payments' expertise in the higher education market is built upon 20+ years of experience in providing solutions for colleges and universities and includes dedicated sales and marketing teams, co-location facilities for system redundancy, and compliance with the highest industry standards for security.



- About Us
 - History
 - Partnerships
 - SunGard Higher Education Collaborative Member
- Key Differentiators
 - Payment Acceptance
 - Certification and Compliance
 - Integration and Implementation
 - Development System
 - Reporting
 - Client Marketing
 - Cost
- Summary – Expertise, Experience and Efficiency

About Official Payments

- Leading provider of e-Commerce in the United States
- In 2007 alone, Official Payments processed 9 million transactions totaling over \$5 billion
- Only payment processor approved for the IRS since 1999
- 3500 payment clients including colleges and universities, state and local governments, utilities, K-12 schools, and property management companies
- 20+ years of experience in Higher Education
- PCI Level 1 compliant



Partnerships

Software Partners



Financial Partners



SunGard Higher Education Collaborative Member

Official Payments has maintained a SunGard Higher Education partnership since 1995 with a shared client base of over 100 colleges and universities.

Institutional challenges in providing e-commerce

- PCI compliance
- e-Commerce provider security
- Integration with your SunGard Higher Education software
- Choosing an experienced provider with proven service and reliability

Benefits to your Institution of the Official Payments solution

- Security
 - PCI Level 1 compliant
 - IRS approved processor
- Banner expertise
 - Live Banner clients – Banner Web Services and JPC
 - 10+ higher education e-commerce customers
- Outstanding customer and client service and support and system availability



SunGard Higher Education Payment Process



Web Payment



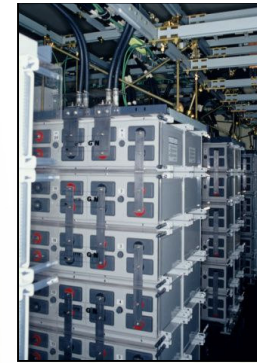
Over the Counter Payment

SunGard HE Database



College/University Bank Account

OFFICIAL PAYMENTS



Clearinghouse



Phone Payments

Class Year: (Example: 1977)

* Gift Amount: \$

Designation:

- Scholarship Fund
- Library Fund
- Athletic Fund
- Campaign Fund
- Payment

Check down the Control Key (Ctrl) to avoid more than one designation. Your gift will be divided equally among the selected funds.

Alumni Donations



Campus Cards

OFFICIAL PAYMENTS CONFERENCE REGISTRATION

2008 Official Payments Education Conference

Attendee Information

First Name* Last Name*

Job Title* Phone Number*

E-mail Address* Fax Number*

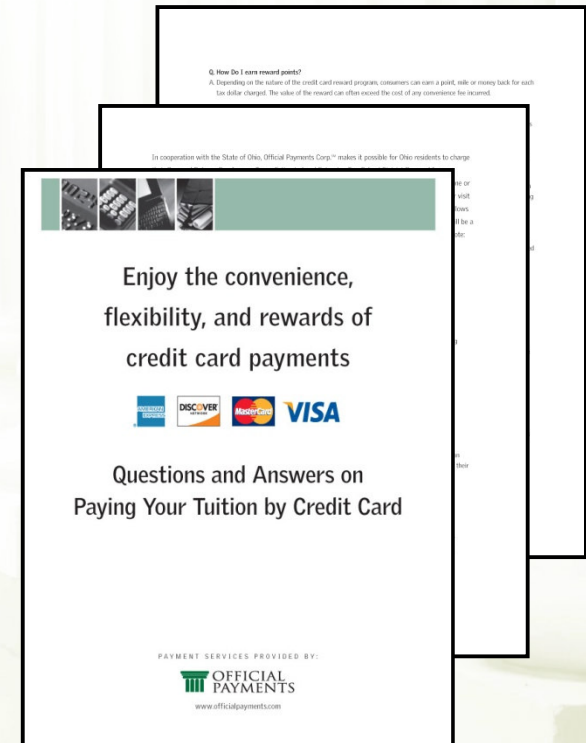
* Required Fields

Conference Registration

Pay tuition and fees, make alumni contributions, load campus cards, register for a conference – online, over the counter or by phone with Official Payments

Key Differentiators

- Visa, MasterCard, Discover, American Express, and Electronic Check
- Internet, IVR and face-to-face channels
- Single point of integration for all pay types
- Secure, reliable and compliant
- Zero development and maintenance costs
- Online reports and real-time system updates
- Marketing support
- Payment Plan and e-Bill



Flexible Payment Acceptance

- Pass through
 - **CAMPUS** pays all associated fees
- Convenience fee
 - Student pays all associated fees
- Flexible fee structures
 - Different departments can have different fee structures
 - Support for multiple Merchant IDs



Certification and Compliance

- SunGard Higher Education Collaborative Member
- PCI Level 1 certified
 - VISA CISP (Cardholder Information Security Program)
 - MasterCard SDP (Site Data Protection) vendor
- Parent/Third Party Payment (FERPA Compliant)
- GLB (Gramm-Leach Bliley) ACT 1999
- NACHA Compliant
- Annual IRS security audit
- Sarbanes-Oxley



Integration and Implementation

Integration

- Single integration point for credit cards and electronic check
- Integration methods
 - Payment solution through JAVA Payment Client
 - Integration through Banner Web Services

Implementation

- Official Payments works with Finance Department on reporting and FAQ requirements
- Official Payments work with IT on set up

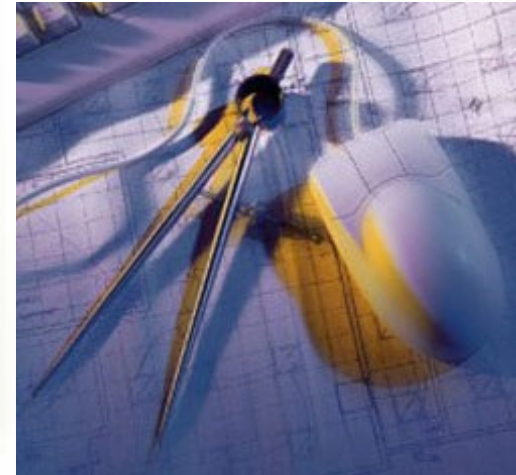
Benefits to **CAMPUS**

- Real-time integration to Banner
- Real-time online reports



Development System

- Development system hosted at Official Payments
- Link provided for testing credit card and e-check transactions
- Ability to test new functionality and on-going changes
- Test new applications before bringing them live
- No hardware or software to purchase or maintain
- Official Payments provides credit card and ACH numbers for testing



Online Management System



Online Management System

OFFICIAL PAYMENTS
Bookmark

User Name

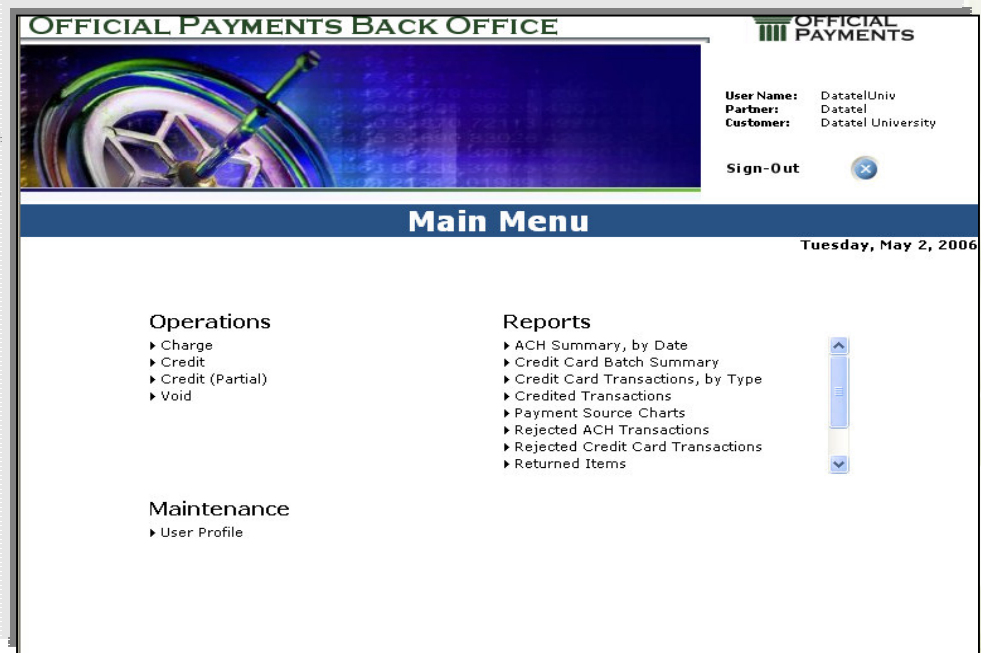
Password

Sign-On

In the spaces provided, please enter your Administrative Site User Name and Password. This information must be provided in order for you to proceed.

- Real-time
- Secure log on
- Access to reports

Copyright © 2005 Official Payments Corporation. All rights reserved.
Powered by **OFFICIAL PAYMENTS CORPORATION**



OFFICIAL PAYMENTS BACK OFFICE

OFFICIAL PAYMENTS

User Name: DatatelUniv
Partner: Datatel
Customer: Datatel University

Sign-Out

Main Menu Tuesday, May 2, 2006

Operations

- ▶ Charge
- ▶ Credit
- ▶ Credit (Partial)
- ▶ Void

Maintenance

- ▶ User Profile

Reports

- ▶ ACH Summary, by Date
- ▶ Credit Card Batch Summary
- ▶ Credit Card Transactions, by Type
- ▶ Credited Transactions
- ▶ Payment Source Charts
- ▶ Rejected ACH Transactions
- ▶ Rejected Credit Card Transactions
- ▶ Returned Items

Reporting

OFFICIAL PAYMENTS		Credit Card Transactions, by Type								
		(7/1/2008 12:00:00AM to 8/16/2008 12:00:00AM)								
		(Settled Transactions Only)								
Official Payments University										
AmerEx										
<u>Conf No</u>	<u>Date</u>	<u>Source</u>	<u>CC #</u>	<u>Auth #</u>	<u>PType</u>	<u>Student ID</u>	<u>Pment Amt</u>	<u>Base Amt</u>	<u>Conv Fee</u>	
11791042	7/1/08	I-Sale	1005	167984	AE	██████████	\$1,131.75	\$1,104.15	\$27.60	
11798311	7/2/08	I-Sale	1098	168937	AE	██████████ VOICE	\$2,307.58	\$2,251.30	\$56.28	
11803493	7/3/08	I-Sale	1001	160034	AE	██████████ VOICE	\$114.95	\$112.15	\$2.80	
11836124	7/9/08	B-Credit	1005	167984	AE	██████████	(\$1,131.75)	(\$1,104.15)	\$(27.60)	
11924740	7/22/08	I-Sale	7245	305443	AE	██████████	\$1,131.75	\$1,104.15	\$27.60	
							\$8,329.50	\$208.24		
							\$3,869.50	\$96.74		
							\$3,433.00	\$85.83		
							\$880.25	\$22.01		
							\$2,459.00	\$61.48		
							\$865.00	\$21.63		
							\$23,303.85	\$582.61		

Blue indicates a portion of ConvFee paid by client.

Credit Card Transactions, By Type

Rejected Credit Card Transactions

Rejected ACH Transactions

OFFICIAL PAYMENTS		Rejected Credit Card Transactions								
		(7/1/2008 12:00:00AM to 8/16/2008 12:00:00AM)								
Official Payments University										
<u>Conf No</u>	<u>CCType</u>	<u>CC#</u>	<u>PmentAmt</u>	<u>Status</u>	<u>Transaction Date / Time</u>	<u>Response Date / Time</u>	<u>Credit Card Processor</u>	<u>Response/Text</u>		
11800966	DS	0601	\$1,175.83	Failed	7/2/08 9:36 pm	7/2/08 10:36 pm12	4001	INVALID TRANS (12)		
								Student ID: ██████████ VOICE		
11836315	MC	8040	\$1,504.50	Failed	7/9/08 1:39 pm	7/9/08 2:39 pm 13	1008	AMOUNT ERROR (13)		
								Student ID: ██████████		
11836340	MC	8040	\$1,504.50	Failed	7/9/08 1:41 pm	7/9/08 2:42 pm 13	1008	AMOUNT ERROR (13)		
								Student ID: ██████████		
12036009	MC	5396	\$3,518.83	Failed	8/4/08 9:00 am	8/4/08 10:00 am51	3001	DEBIT CARD TRANSACTION (1)		
								Student ID: ██████████		
12037496	MC	7603	\$3,966.24	Failed	8/4/08 11:05 am	8/4/08 12:05 pm05	3001	DEBIT CARD TRANSACTION (1)		
								Student ID: ██████████		
12047816	AE	2005	\$1,368.89	Failed	8/4/08 9:53 pm	8/4/08 10:53 pm51	3001	DEBIT CARD TRANSACTION (1)		
								Student ID: ██████████		
12066274	AE	1001	\$3,416.33	Failed	8/6/08 12:51 pm	8/6/08 1:51 pm 51	3001	DEBIT CARD TRANSACTION (1)		
								Student ID: ██████████		

OFFICIAL PAYMENTS		Rejected ACH Transactions								
		(7/1/2008 12:00:00AM to 8/16/2008 12:00:00AM)								
Official Payments University										
<u>Conf No</u>	<u>Acct #</u>	<u>Pment Amt</u>	<u>Status</u>	<u>Transaction Date / Time</u>	<u>Response/Text</u>					
11826106	8164	\$12,033.15	Voided	7/8/08 11:03 am 00						
								Student ID: ██████████		
11826149	8164	\$12,033.15	Voided	7/8/08 11:08 am 00				Student ID: ██████████		
								Original Conf No: 11826106		
								BO User: ██████████ Administrator	Customer: ██████████	
11970162	8178	\$725.00	Failed	7/28/08 1:05 pmDE	1002. Charge ACH failed. Invalid routing number: 547505259			Student ID: ██████████		
12024689	2401	\$843.00	Voided	8/1/08 6:18 pm 00				Student ID: ██████████		
								Student ID: ██████████		
12024690	2401	(\$843.00)	Voided	8/1/08 6:18 pm 00				Student ID: ██████████		
								Student ID: ██████████		

Reporting

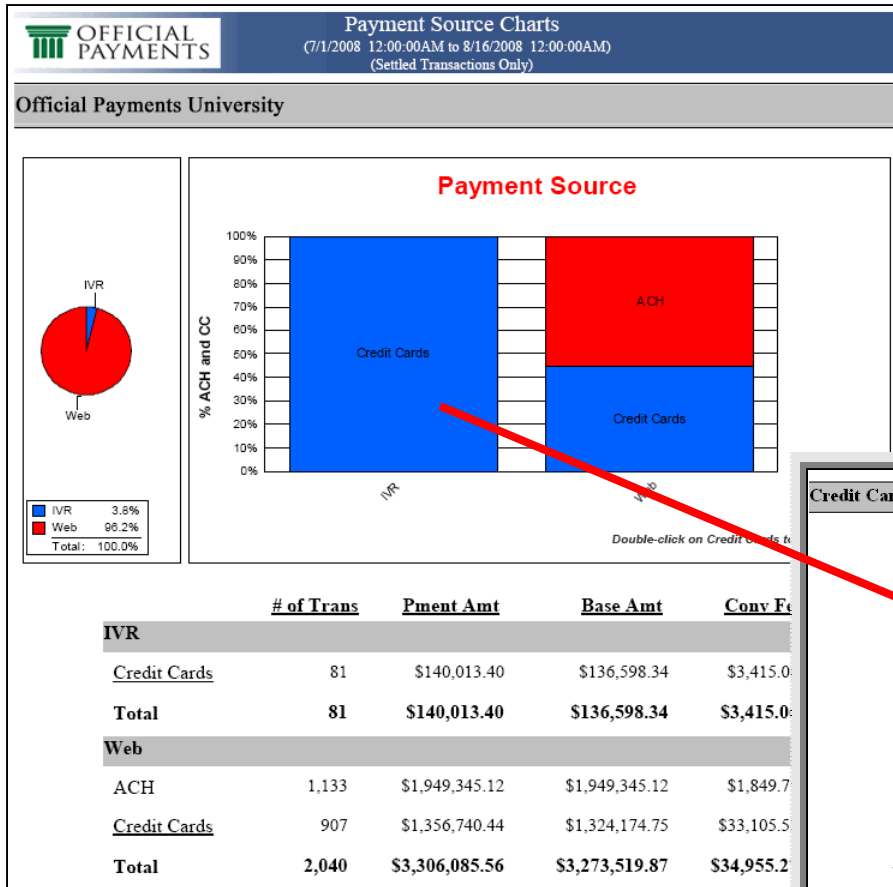
Transaction Details, by Date

Transaction Details, by Confirmation Number

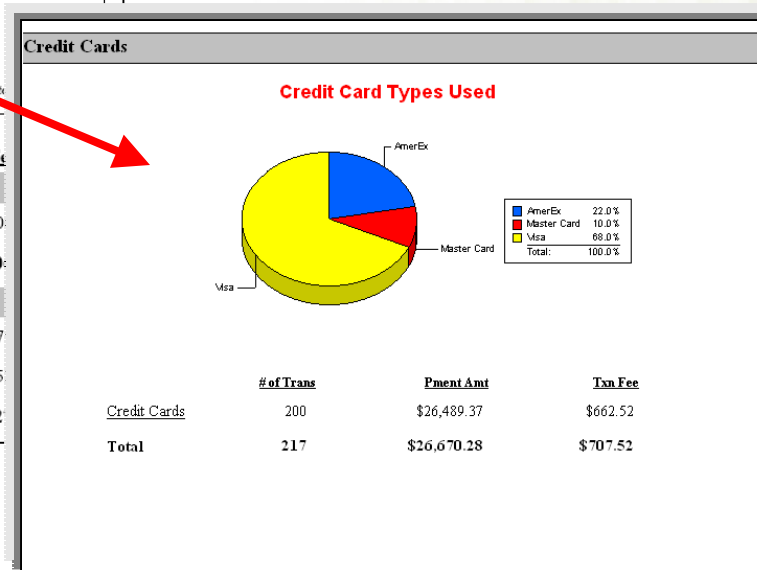
OFFICIAL PAYMENTS Transaction History Details, by Date									
(7/1/2008 12:00:00AM to 8/16/2008 12:00:00AM)									
Official Payments University									
7/9/2008									
* indicates failed transactions					Blue indicates a portion of ConvFee paid by client.				
ConfNo	Time	Student ID	Source	PType	CC/ Acct #	CCAuth/ ACHRou	P'mentAmt	BaseAmt	ConvFee
11836124	1:21 pm		B-Credit	AE	1005	167984	(\$1,131.75)	(\$1,104.15)	\$(27.60)
11836263	1:34 pm		B-Credit	MC	9913	00530Z	(\$1,175.83)	(\$1,147.15)	\$(28.68)
11836315*	1:39 pm		I-Sale	MC	8040	1008 AMOUNT ERROR (13)	\$1,504.50	\$1,467.80	\$36.70
11836340*	1:41 pm		I-Sale	MC	8040	1008 AMOUNT	\$1,504.50	\$1,467.80	\$36.70

OFFICIAL PAYMENTS Transaction History Details, by Confirmation #										
11862505										
Official Payments University										
Double-click on ConfNo to see credit card processor information.										
					Blue indicates a portion of ConvFee paid by client.					
Conf No	Date	Time	Student ID	Source	PType	CC/ Acct #	CCAuth/ ACHRou	Pment Amt	Base Amt	Conv Fee
10792210	2/21/08	7:26 pm		W-Sale	MC	4170	FBDD22	\$128.13	\$125.00	\$3.13
11862505	7/14/08	6:48 am		B-Credit	MC	4170	FBDD22	(\$128.13)	(\$125.00)	\$(3.13)
BO User: Administrator				Customer:						

Reporting



Graphics are available to show at-a-glance the use of the various payment sources (BackOffice, Cashier, IVR, or Web)



Double-clicking on a Credit Card section provides a breakdown of use by credit card types

Client Marketing

- Parent letters
- Postcard mailings
- Student newspaper advertisements
- Flyers and counter cards
- Web site recommendations

WSU Announces Important Payment Changes

WASHINGTON STATE UNIVERSITY
World Class. Face to Face.

Beginning Fall 2008, WSU will accept American Express, Discover and MasterCard credit cards for tuition, fees, course-related expenses, and room and board charges. Credit card payments will be processed by Official Payments, a leader in electronic payment processing. Official Payments charge a 2.5% convenience fee for this service. Cash payments will no longer be accepted. WSU offers a no-cost check option. For more information, please visit www.wsu.edu/studacct and click on FAQs Credit Card Payments.

Effective July 1, 2008, WSU will no longer hand out the University Receivables' Office, due to regulations governing how universities monitor distributions. WSU will send a deposit to your account if you've signed up for direct deposit to your primary mailing address. To sign up for direct deposit, please visit myWSU, select Finances and click on the Direct Deposit Self-Service Form.

Tuition and Fees Due the First Day of Each Semester
Pay On Time to Avoid Late Fees

LATE FEE DATES	
Fall 2008	
September 8, 2008	3%
September 23, 2008	5%
October 8, 2008	7%
Spring 2008	
January 26, 2009	3%
February 10, 2009	5%
February 25, 2009	7%

PAYMENT SERVICES PROVIDED BY:
OFFICIAL PAYMENTS
www.OfficialPayment.com/education

Millersville University
SEIZE THE OPPORTUNITY

May 2007

Dear Students/Parents:

Millersville University is excited to announce the implementation of electronic billing and new on-line payment services accessible through My-Ville and Max on the Millersville homepage. These new on-line and voice response services will offer students and their parents the flexibility and convenience to view and pay their bills electronically.

In order to continue to offer the convenience of credit card payments as an option, Millersville has contracted with Official Payments to process credit card payments on line through My-Ville and Max or by calling the automated Max phone system 717-872-3999. Effective fall 2007, students paying for their tuition and fees by credit card will see several changes.

First, MasterCard, Discover and American Express credit cards will be accepted. VISA cards will not be accepted, due to VISA regulations.

In addition credit card payments will only be accepted through the on-line service or via the automated Max phone system. The Bursar's office will no longer accept credit/debit cards through the mail, in person, or over the phone.

Finally, Official Payments will charge a convenience fee of 2.5% of the payment amount for credit card payments. The convenience fee will appear on your credit card statement as a separate line item from your Millersville tuition payment.

The Bursar's office will be introducing e-checks as an alternative to credit card payments. This new payment option will allow you to pay by check on line with no fee. The Bursar's office will continue to accept regular check payments or money orders by mail and in person. Cash is still accepted as an in-person transaction.

Enclosed is a Frequently Asked Questions document that we hope will answer any remaining questions you may have about Millersville's new online payment options. We are certain that these efforts to continue to offer credit card payments as an option along with our various other payment methods will meet your payment needs.

Sincerely,
Roger V. Bruszewski
Vice President for Finance and Administration

Credit Card Payments

**Fast
Easy
Secure**

AMERICAN EXPRESS DISCOVER MasterCard VISA

ONLINE TUITION PAYMENT

available on 

MY.NORTHWOOD.EDU

After authorization of your payment, a confirmation page will be returned. Please print the confirmation page and keep it for your records.

Making Payments Fast, Easy and Secure
SERVICE PROVIDED BY **OFFICIAL PAYMENTS**

Pay online using WebAdvisor at www.gaston.edu

 **Gaston College**
Opportunities For Life

After authorization of your payment, a confirmation page will be returned. Please print the confirmation page and keep it for your records.

PAYMENT SERVICES PROVIDED BY:
OFFICIAL PAYMENTS
www.officialpayments.com

E-COMMERCE FREQUENTLY ASKED QUESTIONS

Official Payments enables students and parents to pay their tuition bills and fees by credit/PIN-less debit card or electronic check via the Internet, telephone, and Point of Sale (POS). The payment process is simple and secure. Visit **INSTITUTION WEBSITE ADDRESS** or call **INSTITUTION IVR**. American Express®, Discover®, MasterCard®, and electronic checks are accepted.

Paying tuition and fees electronically allows students and parents payment flexibility. The payment process is fast and secure. Official Payments based on the transaction amount. Tuition payments submitted for processing.

Q. Who is Official Payments?
A. Official Payments is the leading provider of electronic payment services for federal, state, and local government agencies, colleges, universities, counties, municipalities, and higher education institutions.

Q. What are the advantages of using Official Payments?
A. The service makes paying tuition and fees more convenient for you and your family.
1. Faster payment via Internet, phone and Point of Sale.
2. Flexibility to pay credit card balances over time.
3. Rewards from card issuers that carry such programs.
4. Comfort of knowing your payment has been received and is authorized by the IRS since 1999.

Berklee

Berklee Summer Program Tuition Payment

This website is for Berklee College of Music tuition payments. Please complete the fields below, then click the "Continue" button to proceed with online payment.

Name (e.g., John Smith):

Student ID:

Amount To Pay:

Terms Of Use | Powered by Official Payments Corp. | PRIVACY STATEMENT

User Name: Password:

MOUNT VERNON NAZARENE UNIVERSITY
Life Changing

HOME

Welcome to myMVNU

Navigation Help
Guest Cougar Cart
Campus News
What is myMVNU?
What should I do next?

Forgot My Password
Create My Account

You are here: [Welcome to myMVNU](#)

Guest Cougar Cart

You are paying for:
Events Center Contribution for an amount of \$1,000.00

Quantity	Item	Amount
1	Events Center Gift	\$1,000.00

Credit card and electronic check (ACH) transactions are processed by Official Payments, a leading provider of electronic payment options, at no cost to the cardholder for the item(s) listed above. Official Payments is PCI, FERPA and GLB compliant. The information Official Payments gathers is private and will not be forwarded to anyone.

The Bottom Line - Cost

Feature	Official Payments	Competition
Combined gateway and processor	YES	
Merchant IDs	PROVIDED	Charge per MID
Set-up, Licensing Fees, Development Costs, Annual Maintenance		Varies from vendor to vendor
Credit Card acceptance	VISA, MasterCard, Discover, American Express, E-checks	VISA and MasterCard
Float on credit card fees	YES	
24/7/365	YES	Annual Maintenance Agreement may be required
Dedicated Client Marketing Team	YES	Not available
Hardware and Software	NONE REQUIRED	
Payment Plans, e-Billing	YES	Charge
Credit Card Fee		
ACH Fee		

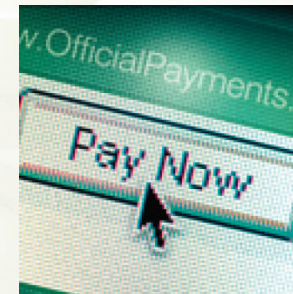
Summary – Expertise, Experience and Efficiency

- Pioneer of the hosted payments platform and established market leader
- In-depth market knowledge and established dedicated sales team
- Fully compliant and secure meeting IRS' requirements
- State-of-the-art payments platform
 - Fully hosted – hardware, software and support included
 - Available 24/7/365
 - Fully scalable with migration path
- Rapid implementation and revenue flow
- Toll-free client support and service
- Dedicated client marketing team
 - Awareness and usage campaigns
 - Point-of-sale materials
 - Website consultations and recommendations



Summary – Expertise, Experience and Efficiency

- **Reliability**
 - Secure development system for testing new implementations
 - Zero maintenance and development costs
 - Online reports and real-time system updates
- **Security**
 - PCI Level 1 certified
 - FERPA and GLB compliant
 - National Automated Clearing House Association (NACHA) compliant
- **Convenience**
 - Internet, IVR, and face-to-face channels
 - 24/7/365 availability from anywhere
 - Flexible payment options
- **Simplicity**
 - Supported through JAVA Payment Client or Banner Web Services
 - Flexible pricing models for all payment types
 - Hosted payment gateway
- **Rewards**
 - Complete solution provided at no cost to our clients
 - Customer and client services
 - Marketing consultation and collaboration



Tuition and Fees Officially Paid.

Greg Parrish
Senior Account Executive
Higher Education Sales
334-321-3767 ext. 7442
gparrish@officialpayments.com

Cathy Floyd
Director, Client Marketing
334-321-3767 ext. 7355
cfloyd@officialpayments.com



Confidential Property of Official Payments Corp.



Client Lists



Confidential Property of Official Payments Corp.



SunGard Higher Education Customers

- Antelope Valley College, CA
- Arapahoe Community College, CO
- Bakersfield College (Kern CCD), CA
- Barstow College, CA
- Baton Rouge Community College, LA
- Canada College (San Mateo CCD), CA
- Central Carolina Technical College, SC
- Cerro Coso Community College (Kern CCD), CA
- Chabot College (Chabot-Las Positas CCD), CA
- Citrus College, CA
- City College of San Francisco, CA
- Coastline Community College (Coast CCD), CA
- Colorado Northwestern Community College, CO
- College of San Mateo (San Mateo CCD), CA
- Community College of Aurora, CO
- Community College of Denver, CO
- Community College of Philadelphia, PA
- Cuesta College, CA
- Front Range Community College, CO
- Gavilan College, CA
- Golden West College (Coast CCD), CA
- Holmes Community College, MS
- Imperial Valley College, CA
- Lamar Community College, CO
- Las Positas College (Chabot-Las Positas CCD), CA
- Millersville University, PA
- Moorpark College (Ventura CCCC), CA
- Morgan Community College, CO
- N. New Mexico College, NM
- New College of Florida, FL
- Northeastern Junior College, CO
- Northwest State Community College, OH

SunGard Higher Education Customers

- Oakton Community College, CA
- Orange Coast College (Coast CCD), CA
- Otero Community College, CO
- Oxnard College (Ventura CCCD), CA
- Pikes Peak Community College, CO
- Porterville College (Kern CCD), CA
- Presbyterian College, SC
- Pueblo Community College, CO
- Red Rock Community College, CO
- Santa Fe Community College, NM
- Solano Community College, CA
- St. Mary's University, TX
- Trinidad State Junior College, CO
- Ventura College (Ventura CCCD), CA
- Western New Mexico University, NM
- Westfield State College, MA
- Xavier University, LA

Representative Clients

- Antelope Valley College, CA
- Antioch University, OH
- Arapahoe Community College (Colorado CCS), CO
- Bakersfield College (Kern CCD), CA
- Barstow College, CA
- Baton Rouge Community College, LA
- Becker College, MA
- Berklee College of Music, MA
- Birmingham Southern, AL
- Canada College (San Mateo CCD), CA
- Cape Fear Community College, NC
- Carleton College, MN
- Carlos Albizu University, FL
- Carroll College, MT
- Carson-Newman, TN
- Catawba College, NC
- Central Carolina Technical College, SC
- Central Ohio Tech College, OH
- Central Wyoming College, WY
- Cerritos Community College, CA
- Cerro Coso Community College (Kern CCD), CA
- Chabot College (Chabot-Las Positas CCD), CA
- Chaffey College, CA
- Citrus College, CA
- City College of San Francisco, CA
- Clemson University, SC
- Coastline Community College (Coast CCD), CA
- College of DuPage, IL
- College of San Mateo (San Mateo CCD), CA
- Colorado Christian University, CO
- Colorado Northwestern Community College (Colorado CCS), CO
- Columbia College (Yosemite CCD), CA
- Community College of Aurora (Colorado CCS), CO
- Community College of Denver (Colorado CCS), CO
- Community College of Philadelphia, PA
- Contra Costa College (Contra Costa CCD), CA
- Copper Mountain Community College District, CA
- Cuesta College, CA
- Cumberland University, TN
- Daemen College, NY
- Danville Area Community College, IL
- Dean College, MA
- Delaware Valley College, PA
- DeSales University, PA
- Diablo Valley College (Contra Costa CCD), CA
- Eastern Oklahoma State College, OK
- El Camino College, CA
- Fayetteville Tech, NC
- Felician College, NJ
- Front Range Community College (Colorado CCS), CO
- Furman University, SC
- Gaston College, NC
- Gavilan College, CA

Representative Clients

- GeorgeTown College, KY
- Golden West College (Coast CCD), CA
- Grand View College, IA
- Grossmont-Cuyumaca CCD, CA
- Hartnell College, CA
- Haywood Community College, NC
- Holmes Community College, MS
- Illinois Valley College, IL
- Imperial Valley College, CA
- Johnston Community College, NC
- Kansas City Kansas Community College, KS
- Kaskaskia College, IL
- Kishwaukee College, IL
- Lamar Community College (Colorado CCS), CO
- Las Positas College (Chabot-Las Positas CCD), CA
- Lassen Community College, CA
- Latter-Day Saints Business College, UT
- Lee University, TN
- Lewis-Clark State College, ID
- Lincoln Memorial University, TN
- Linfield College, OR
- Loras College, IA
- Marymount University, VA
- Mendocino College, CA
- Millersville University, PA
- Mission College (West Valley-Mission CCD), CA
- Modesto Junior College (Yosemite CCD), CA
- Monmouth College, IL
- Moorpark College (Ventura CCCC), CA
- Morgan Community College (Colorado CCS), CO
- Mount San Antonio Community College, CA
- Mount Vernon Nazarene College, OH
- Northern New Mexico College, NM
- Nash Community College, NC
- Neumann College, PA
- New College of Florida, FL
- North Central State College, OH
- Northeastern Junior College (Colorado CCS), CO
- Northern Wyoming Community College District, WY
- Northwest State Community College, OH
- Northwestern Business College, IL
- Northwood University, MI
- Oakton Community College, IL
- Oglethorpe University, GA
- Ohlone College, CA
- Orange Coast College (Coast CCD), CA
- Otero Community College (Colorado CCS), CO
- Our Lady of the Lakes, LA
- Oxnard College (Ventura CCCC), CA
- Pacific Union College, CA
- Palo Verde Community College District, CA
- Palomar College, CA

Representative Clients

- Parkland College, IL
- Peralta Community College District, CA
- Pikes Peak Community College (Colorado CCS), CO
- Porterville College (Kern CCD), CA
- Pratt Institute, NY
- Presbyterian College, SC
- Pueblo Community College (Colorado CCS), CO
- Rancho Santiago CCD, CA
- Red Rock Community College (Colorado CCS), CO
- Roanoke College, VA
- Rock Valley College, IL
- Rockingham Community College, NC
- Rowan-Cabarrus, NC
- Rust College, MS
- San Francisco State University, CA
- Santa Fe Community College, NM
- Santa Monica College, CA
- Sierra College, CA
- Simpson University, CA
- Solano Community College, CA
- Southern Adventist University, TN
- Southwestern Law, CA
- St Leo University, FL
- St. Francis College, NY
- St. Mary's University, TX
- Stanly Community College, NC
- Surry Community College, NC
- Three Rivers Community College, MO
- Trinidad State Junior College (Colorado CCS), CO
- Tuskegee University, AL
- Union University, TN
- University of Sciences in Philadelphia, PA
- University of West Alabama, AL
- University of Evansville, IN
- University of Louisville, KY
- University of Wisconsin at Green Bay, WI
- University of Wisconsin at Parkside, WI
- University of Wisconsin at Steven's Point, WI
- University of Wisconsin at Platteville, WI
- Ventura College (Ventura CCD), CA
- Victor Valley College, CA
- Warner Pacific College, OR
- Washington State University, WA
- Wesley Theological Seminary, DC
- West Valley College (WV Mission CCD), CA
- Western New Mexico University, NM
- Westfield State College, MA
- William Jewel College, MO
- Xavier University, LA
- Yuba College, CA

Banner Web Services Real-Time Interface



Confidential Property of Official Payments Corp.




Banner Web Services Real-Time Interface

MU BAN7 Web Information System

Personal Information **Student and Financial Aid**

Search

Semester Account - Online Payment

 To pay online, **select 'Online Payment'** at the bottom of this screen.

This is your account summary by term. Anticipated third party contract payments, financial aid, etc.

Summary

Account Balance: -\$56,455.00

Fall 2008 - Millersville University

Detail Code	Description
YIVC	Current Title
YIVP	Past Chgs T
Term Charges:	
Term Credits and Paym	
Term Balance:	

MU BAN7 Web Information System

Personal Information **Student and Financial Aid**

Search

RETURN TO MENU SITE MAP HELP EXIT

Millersville University Payment

MTESTUSER Test A. User
Aug 14, 2008 03:10 pm

Select Payment Method

Credit Card Payment

Electronic Check

RELEASE: 7.3

powered by **SUNGARD HIGHER EDUCATION**

Official Payments' Credit Card Entry Screen

Millersville University

SEIZE THE OPPORTUNITY

Please enter your credit card information. * indicates required field

Amount To Pay: *

Card Type
 *

Credit Card Number * Expiration Date (mm/yy) / * Card Identification Number * [How do I find this?](#)

Card Holder's Information

Card Holder's Name: *

Street Address: *

Apartment/Suite:

City: *

State/Province: *


ZIP/Postal Code: *

Primary Phone Number E-Mail Address

() - * ext:

Send Email Confirmation

Copyright © 2008, Official Payments Corp. [TERMS OF USE](#) | [PRIVACY STATEMENT](#)
All Rights Reserved. Build 1.7.619.0

Official Payments' e-Check Entry Screen

Millersville University
SEIZE THE OPPORTUNITY

Please enter your Bank Account information. * indicates required field

Amount To Pay: *

Account Type
*

Routing Number * Account Number *

For
⑆001234504⑆ 12345678⑈ 0100
Routing Number Account Number Check Number

Note: Please do NOT enter the Check Number.

Account Holder Information

Account Holder's Name: *

Street Address: *

Apartment/Suite:

City: *

State: *

ZIP/Postal Code: *

Primary Phone Number EMail Address
() - * ext:

Verification Screen

Millersville University

SEIZE THE OPPORTUNITY

Please verify that the following information is correct.

Card Type:	MasterCard	Current Amount Due:	4,000.00
Credit Card Number:	**** 5454	Convenience Fee:	100.00
Expiration Date:	August 2010	Total Charge:	4,100.00
Billing Address:	Chuck Knox 6135 Lime Rd Parkesburg, PA 19365	Email Address:	cknox@mu.edu
		Contact Number:	(717) 442-9090

I agree to the [Terms Of Use](#)

Go Back

Make Payment

Cancel

Copyright © 2008. Official Payments Corp. [TERMS OF USE](#) | [PRIVACY STATEMENT](#)
All Rights Reserved. Build 1.7.619.0



Confirmation Screen

Millersville University

SEIZE THE OPPORTUNITY

Confirmation of Payment

Confirmation Number/Transaction ID: **4542698**
Date/Time Paid: 8/14/2008 2:14 PM Central

Card Type:	MasterCard	Amount Paid:	4,000.00
Credit Card Number:	**** 5454	Fee Paid:	100.00
		Total Paid:	4,100.00

Billing Address:	Chuck Knox	Email Address:	cknox@mu.edu
	6135 Lime Rd	Contact Number:	(717) 442-9090
	Parkeburg, PA 19365		

Do not press the browser Back button, use the back or continue buttons below

Copyright © 2008. Official Payments Corp. [TERMS OF USE](#) | [PRIVACY STATEMENT](#)
All Rights Reserved. Build 1.7.619.0

